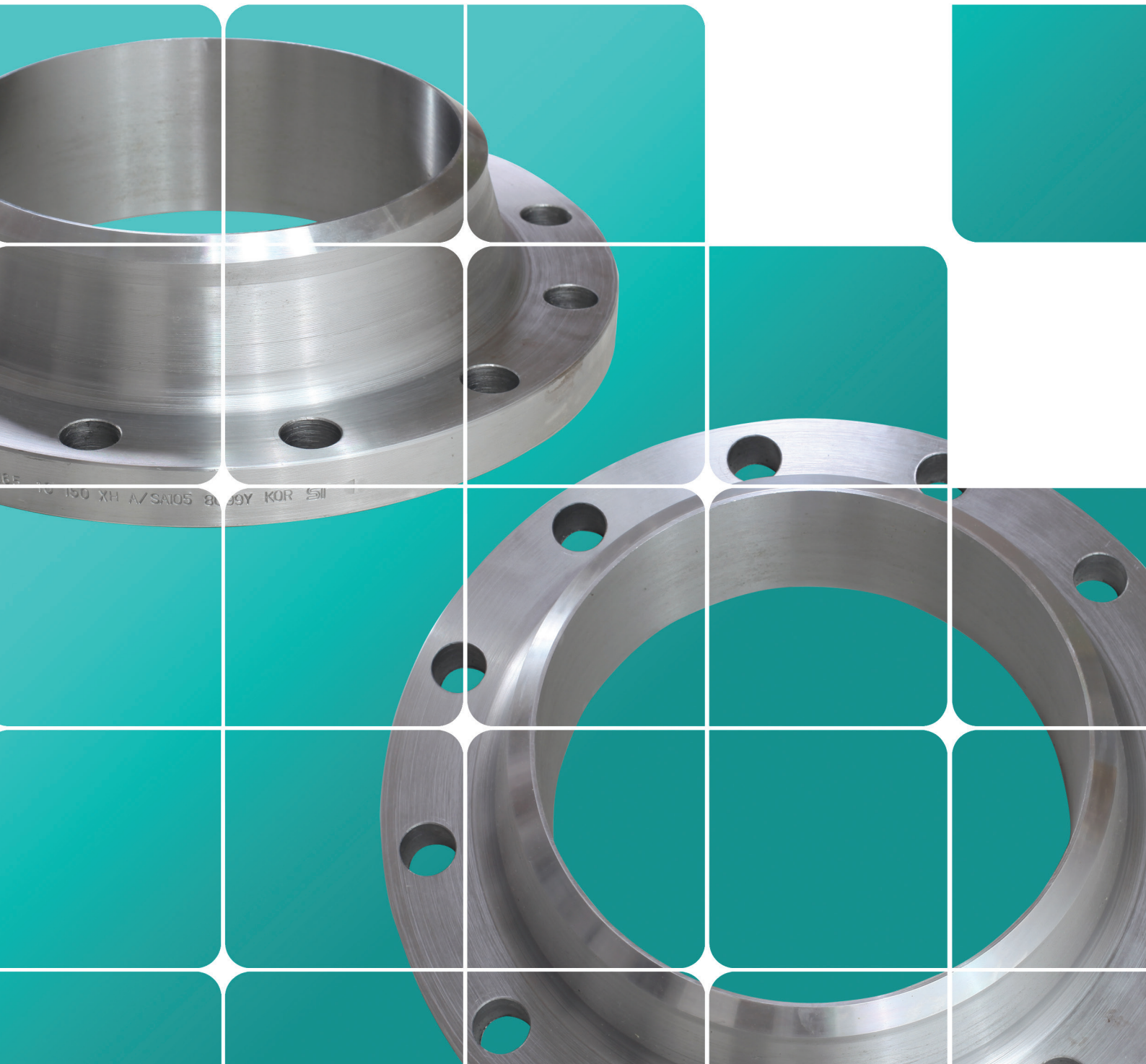


API 6A FLANGES

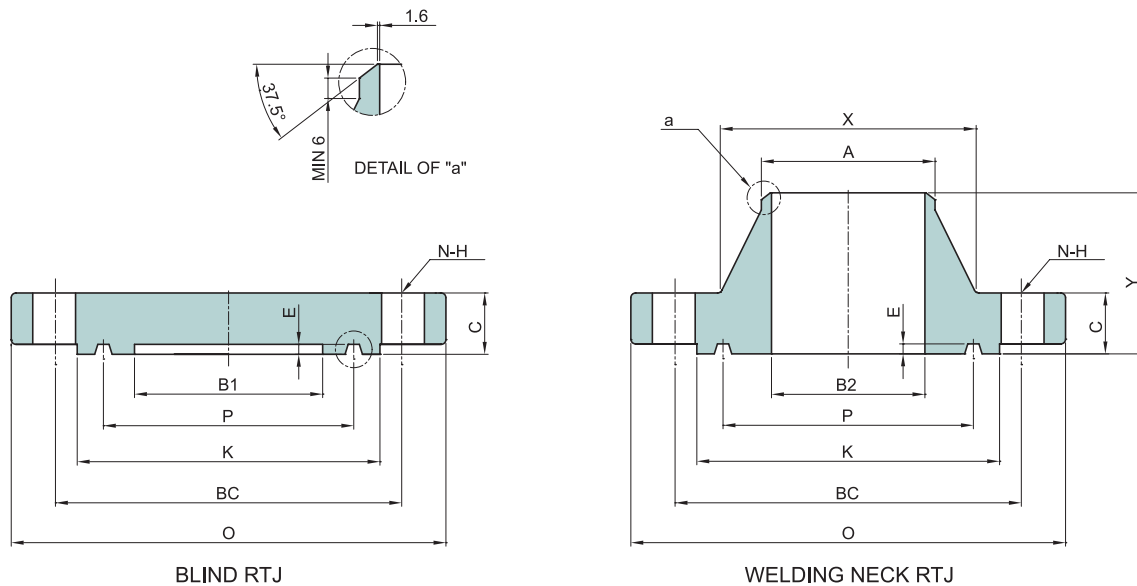


- API 6A - Type - 6B 13.8 MPA (2000 psi)
- API 6A - Type - 6B 20.7 MPA (3000 psi)
- API 6A - Type - 6B 34.5 MPA (5000 psi)
- API 6A - Type - 6BX 13.8 MPA (2000 psi)
- API 6A - Type - 6BX 20.7 MPA (3000 psi)
- API 6A - Type - 6BX 34.5 MPA (5000 psi)

- API 6A - Type - 6BX 69.0 MPA (10000 psi)
- API 6A - Type - 6BX 103.5 MPA (15000 psi)
- API 6A - Type - 6BX 138.0 MPA (20000 psi)



API 6A - Type - 6B 13.8 MPA (2000 psi)



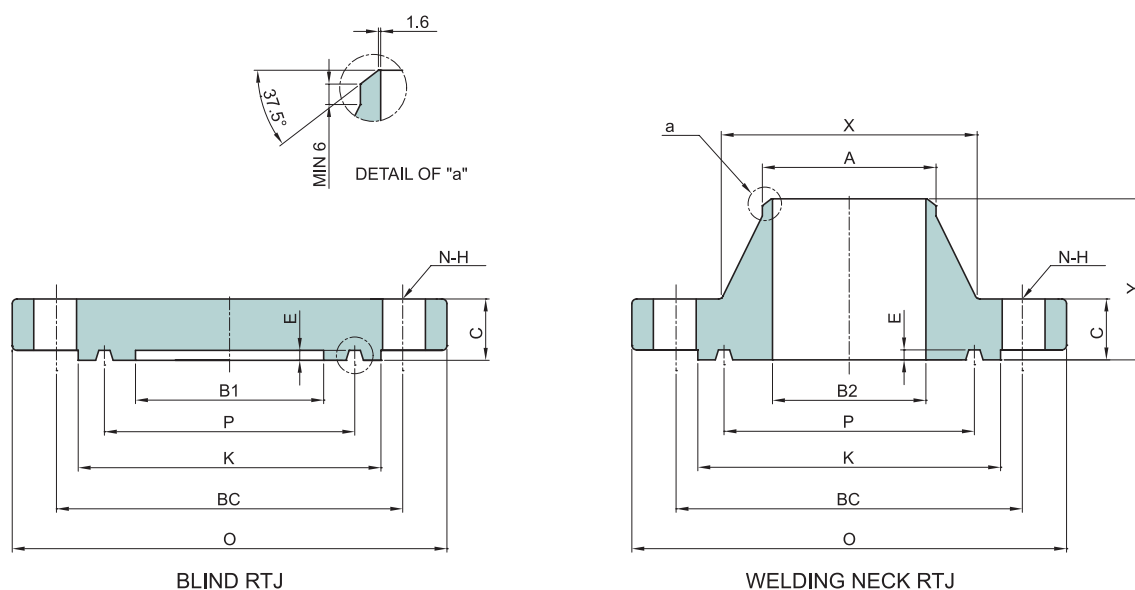
UNIT : mm

Size	B1	O	C	K	P	E	X	BC	N	H	Y	A	B2	Ring Number
														R or RX
2 1/16"	53.2	165	33.4	108	82.55	7.9	84	127	8	20	81	60.3	53.3	23
2 9/16"	65.9	190	36.6	127	101.60	7.9	100	149.2	8	23	88	73.0	63.5	26
3 1/8"	81.8	210	39.7	146	123.83	7.9	117	168.3	8	23	91	88.9	78.7	31
4 1/16"	108.7	275	46.1	175	149.23	7.9	152	215.9	8	26	110	114.3	103.1	37
5 1/8"	131.0	330	52.4	210	180.98	7.9	189	266.7	8	29	122	141.3	122.9	41
7 1/16"	181.8	355	55.6	241	211.15	7.9	222	292.1	12	29	126	168.3	147.1	45
9"	229.4	420	63.5	302	269.88	7.9	273	349.3	12	32	141	219.1	199.1	49
11"	280.2	510	71.5	356	323.85	7.9	343	431.8	16	35	160	273.0	248.4	53
13 5/8"	346.9	560	74.7	413	381.00	7.9	400	489	20	35	-	-	-	57
16 3/4"	426.2	685	84.2	508	469.90	7.9	495	603.2	20	42	-	-	-	65
21 1/4"	540.5	815	98.5	635	584.20	9.7	610	723.9	24	45	-	-	-	73

NOTE :

- 1) TOLERANCE ACCORDING TO API 6A - 20TH
- 2) RING GASKET ACCORDING TO API 6A-20TH

API 6A - Type - 6B 20.7 MPA (3000 psi)



UNIT : mm

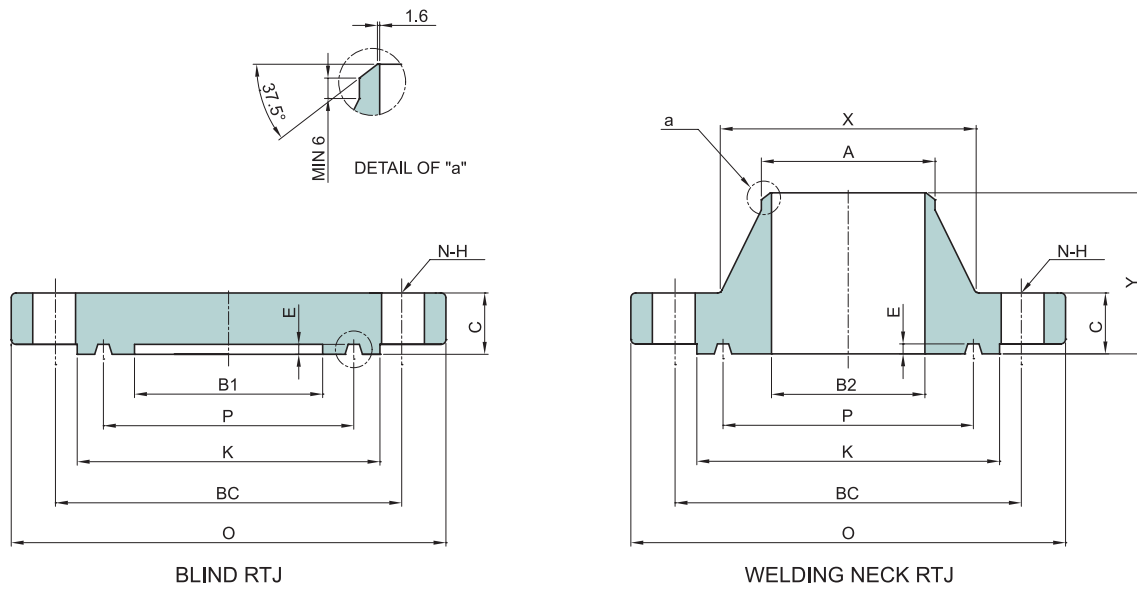
Size	B1	O	C	K	P	E	X	BC	N	H	Y	A	B2	Ring Number R or RX
2 1/16"	53.2	215	46.1	124	95.25	7.9	104.8	165.1	8	26	109.6	60.3	50.0	24
2 9/16"	65.9	245	49.3	137	107.95	7.9	123.8	190.5	8	29	112.7	73.0	59.7	27
3 1/8"	81.8	240	46.1	156	123.83	7.9	127.0	190.5	8	26	109.5	88.9	74.4	31
4 1/16"	108.7	290	52.4	181	149.23	7.9	158.8	235.0	8	32	122.2	114.3	98.0	37
5 1/8"	131.0	350	58.8	216	180.98	7.9	190.5	279.4	8	35	134.9	141.3	122.9	41
7 1/16"	181.8	380	63.5	241	211.15	7.9	235.0	317.5	12	32	147.6	168.3	147.1	45
9"	229.4	470	71.5	308	269.88	7.9	298.5	393.7	12	39	169.9	219.1	189.7	49
11"	280.2	545	77.8	362	323.85	7.9	368.3	469.9	16	39	192.1	273	237.2	53
13 5/8"	346.9	610	87.4	419	381.00	7.9	419.1	533.4	20	39	-	-	-	57
16 3/4"	426.2	705	100.1	524	469.90	11.2	508.0	616.0	20	45	-	-	-	66
20 3/4"	527.8	855	120.7	648	584.20	12.7	622.3	749.3	20	54	-	-	-	74

NOTE :

1) TOLERANCE ACCORDING TO API 6A - 20TH

2) RING GASKET ACCORDING TO API 6A-20TH

API 6A - Type - 6B 34.5 MPA (5000 psi)



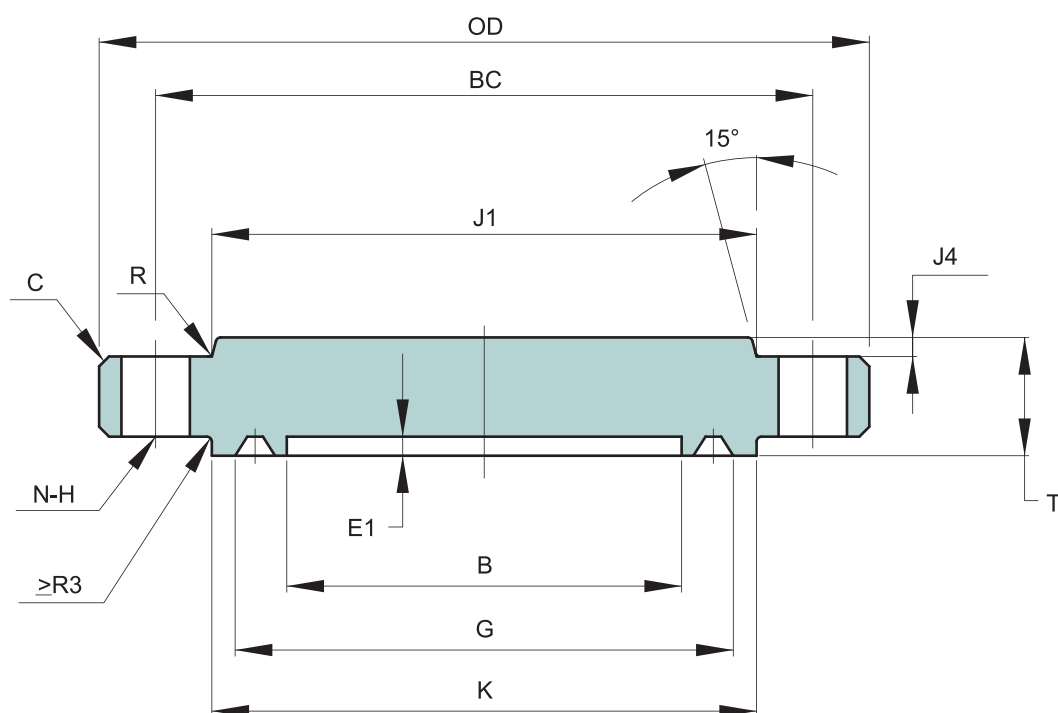
UNIT : mm

Size	B1	O	C	K	P	E	X	BC	N	H	Y	A	B2	Ring Number
														R or RX
2 1/16"	53.2	215	46.1	124	95.25	7.9	104.8	165.1	8	26	109.5	60.3	43.7	24
2 9/16"	65.9	245	49.3	137	107.95	7.9	123.8	190.5	8	29	112.7	73.0	54.9	27
3 1/8"	81.8	265	55.6	168	136.53	7.9	133.3	203.2	8	32	125.4	88.9	67.5	35
4 1/16"	108.7	310	62.0	194	161.93	7.9	161.9	241.3	8	35	131.8	114.3	88.1	39
5 1/8"	131.0	375	81.0	229	193.68	7.9	196.8	292.1	8	42	163.5	141.3	110.3	44
7 1/16"	181.8	395	92.1	248	211.15	9.7	228.6	317.5	12	39	181	168.3	132.6	46
9"	229.4	485	103.2	318	269.88	11.2	292.1	393.7	12	45	223.8	219.1	173.8	50
11"	280.2	585	119.1	371	323.85	11.2	368.3	482.6	12	51	265.1	273.1	216.7	54

NOTE :

- 1) TOLERANCE ACCORDING TO API 6A - 20TH
- 2) RING GASKET ACCORDING TO API 6A-20TH

API 6A - Type - 6BX 13.8 MPA (2000 psi)



(BLIND RTJ)

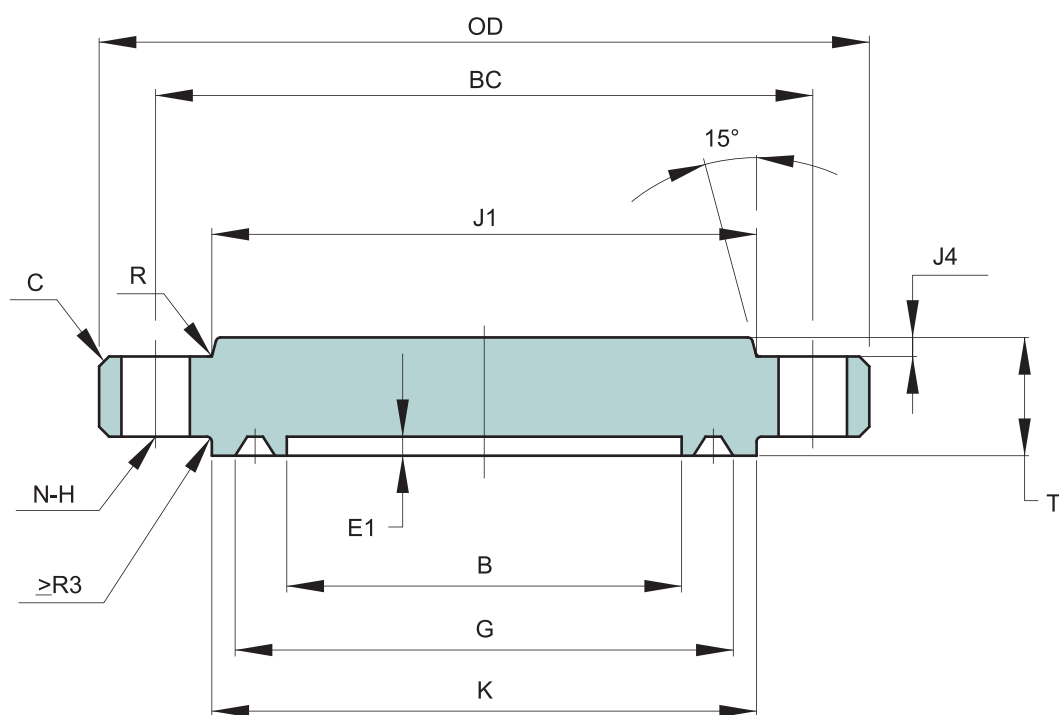
UNIT : mm

Size	OD	C	E1	G	K	T	J1	J4	R	BC	N	H	Ring Number
													BX
26 3/4"	1040	6	21.4	768.33	805	126.3	835.8	9.7	16	952.5	20	48	167
30"	1120	6	23	862.3	908	134.2	931.9	17.5	16	1039.80	32	45	303

NOTE :

- 1) TOLERANCE ACCORDING TO API 6A-20TH
- 2) RING GASKET ACCORDING TO API 6A-20TH

API 6A - Type - 6BX 20.7 MPA (3000 psi)



(BLIND RTJ)

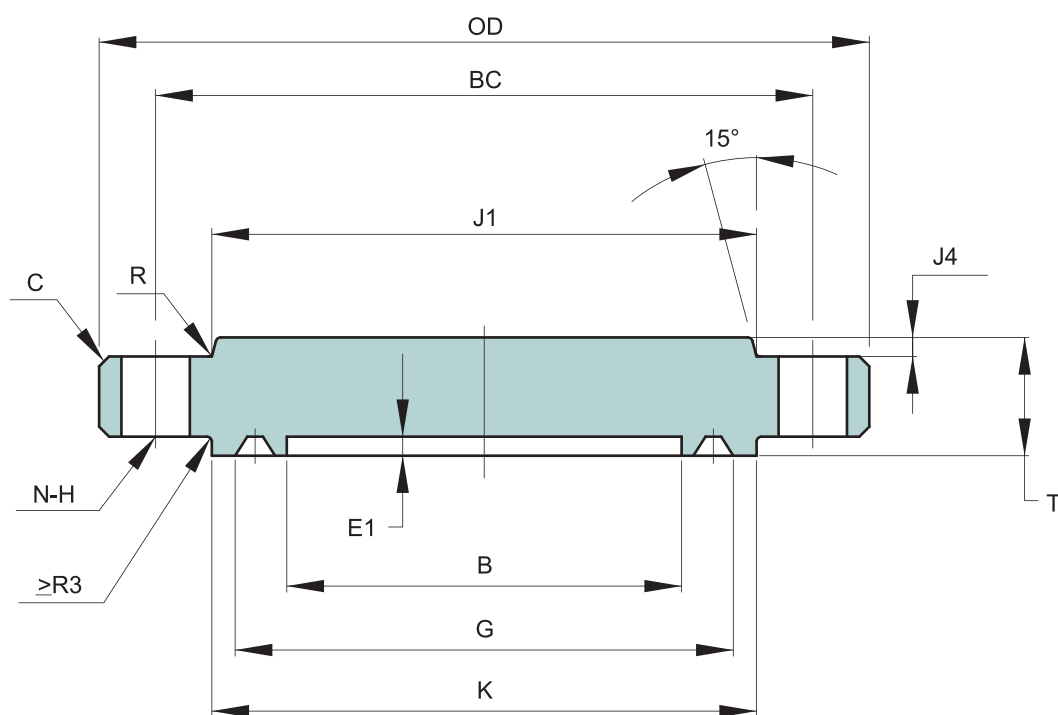
UNIT : mm

Size	OD	C	E1	G	K	T	J1	J4	R	BC	N	H	Ring Number
													BX
26 3/4"	1100	6	21.4	774.22	832	161.2	870	0	16	1000.10	24	54	168
30"	1185	6	23	862.30	922	167.1	970	12.7	16	1090.60	32	51	303

NOTE :

- 1) TOLERANCE ACCORDING TO API 6A-20TH
- 2) RING GASKET ACCORDING TO API 6A-20TH

API 6A - Type - 6BX 34.5 MPA (5000 psi)



(BLIND RTJ)

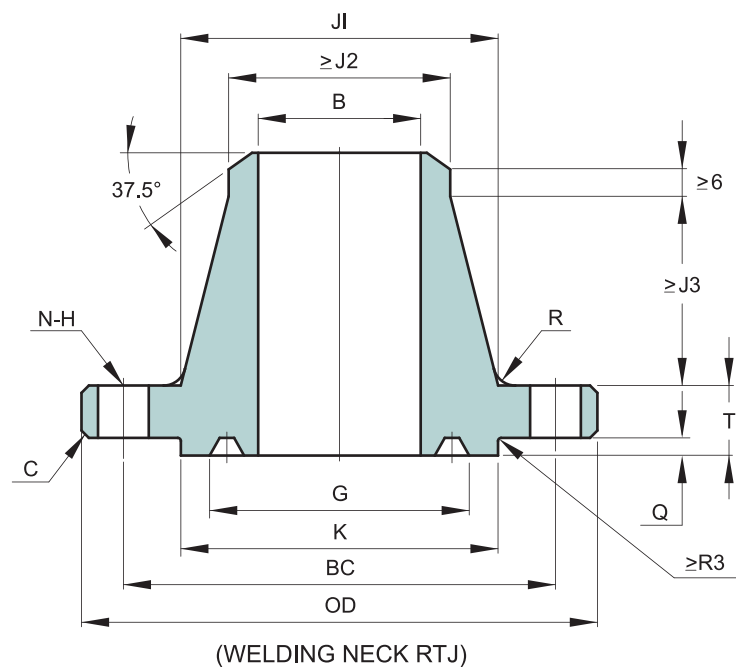
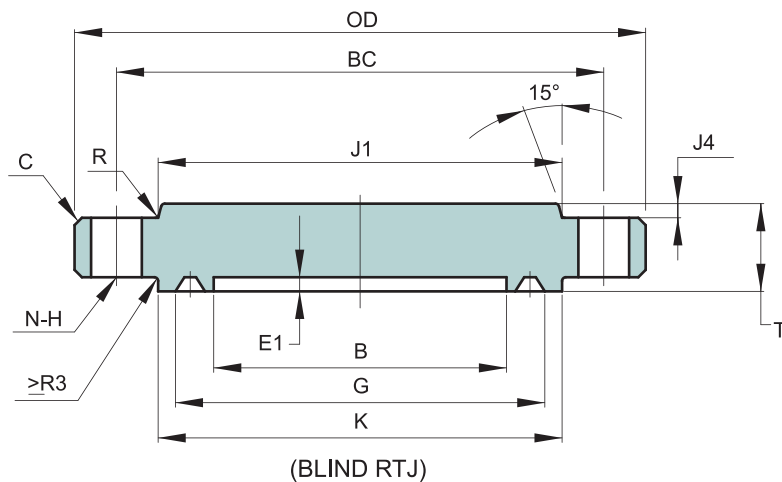
UNIT : mm

Size	OD	C	E1	G	K	T	J1	J4	R	BC	N	H	Ring Number
													BX
13 5/8"	675	6	14.3	408.00	457	112.8	481.0	23.9	16	590.60	16	45	160
16 3/4"	770	6	8.3	478.33	535	130.2	555.6	17.5	19	676.30	16	51	162
18 3/4"	905	6	18.3	563.50	627	165.9	674.7	19.1	16	803.30	20	54	163
21 1/4"	990	6	19.1	632.56	702	181.0	758.8	22.4	18	885.80	24	54	165

NOTE :

- 1) TOLERANCE ACCORDING TO API 6A-20TH
- 2) RING GASKET ACCORDING TO API 6A-20TH

API 6A - Type - 6BX 69.0 MPA (10000 psi)



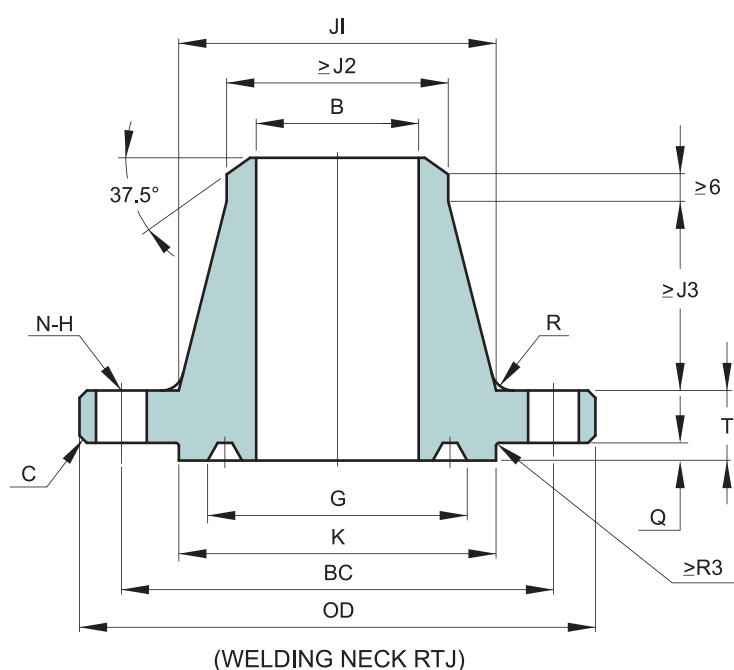
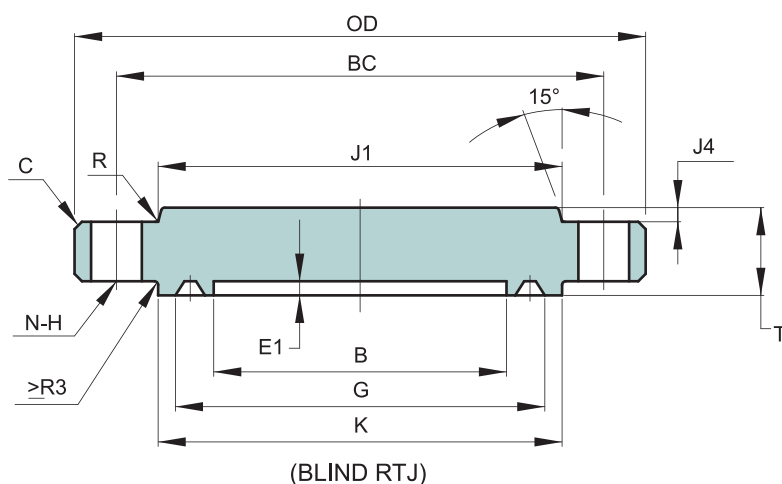
UNIT : mm

Size	B	OD	C	E1	Q (MAX.)	G	K	T	J1	J2	J3	J4	R	BC	N	H	Ring Number
																	BX
1 13/16"	46.8	185	3	-	5.56	77.77	105	42.1	88.9	65.1	48.5	-	10	146.10	8	23	151
2 1/16"	53.2	200	3	-	5.95	86.23	111	44.1	100.0	74.7	51.6	-	10	158.80	8	23	152
2 9/16"	65.9	230	3	-	6.75	102.77	132	51.2	120.7	92.1	57.2	-	10	184.20	8	26	153
3 1/16"	78.6	270	3	-	7.54	119.00	152	58.4	142.1	110.2	63.5	-	10	215.90	8	29	154
4 1/16"	104.0	315	3	-	8.33	150.62	185	70.3	182.6	146.1	73.1	-	10	258.80	8	32	155
5 1/8"	131.0	360	3	9.5	9.53	176.66	221	79.4	223.8	182.6	81.0	6.4	10	300.00	12	32	169
7 1/16"	180.2	480	6	11.1	11.11	241.83	302	103.2	301.6	254.0	95.3	9.7	16	403.20	12	42	156
9 "	229.4	550	6	12.7	12.70	299.06	359	123.9	374.7	327.1	93.7	9.7	16	476.30	16	42	157
11"	280.2	655	6	14.3	14.29	357.23	429	141.3	450.9	400.1	103.2	14.2	16	565.20	16	48	158
13 5/8"	346.9	770	6	15.9	15.88	432.64	518	168.3	552.5	495.3	114.3	17.5	16	673.10	20	51	159
16 3/4"	426.2	870	6	8.3	8.33	478.33	576	168.3	655.6	601.7	76.2	30.2	19	776.30	24	51	162
18 3/4"	477.0	1040	6	18.3	18.26	577.90	697	223.1	752.5	674.7	155.6	25.4	16	925.50	24	61	164
21 1/4"	540.5	1145	6	19.1	19.05	647.88	781	241.3	847.7	762.0	165.1	31.8	21	1022.40	24	67	166

NOTE :

- 1) TOLERANCE ACCORDING TO API 6A-20TH
- 2) RING GASKET ACCORDING TO API 6A-20TH

API 6A - TYPE - 6BX 103.5 MPA (15000 PSI)



UNIT : mm

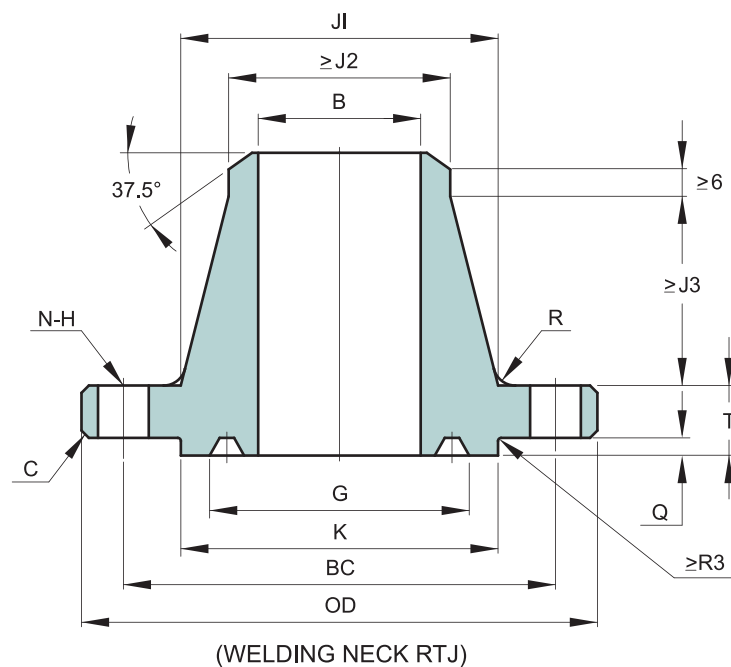
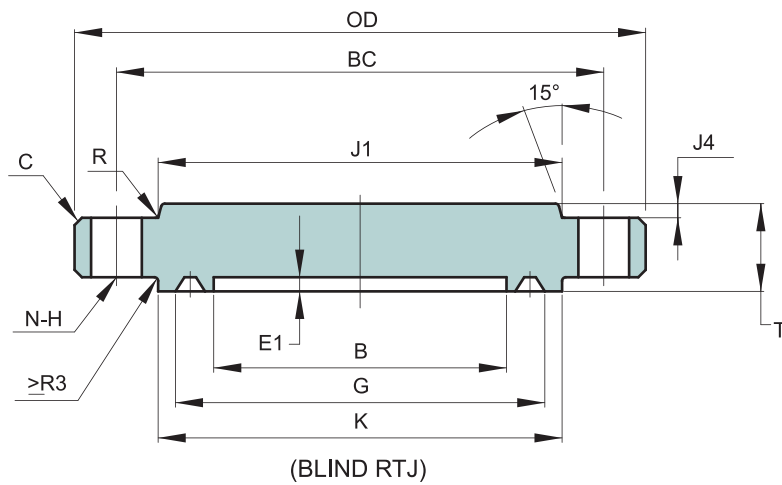
Size	B	OD	C	E1	Q (MAX.)	G	K	T	J1	J2	J3	J4	R	BC	N	H	Ring Number
																	BX
1 13/16"	46.8	210	3	-	5.56	77.77	106	45.3	97.6	71.4	47.6	-	10	160.3	8	26	151
2 1/16"	53.2	220	3	-	5.95	86.23	114	50.8	111.1	82.5	54.0	-	10	174.60	8	26	152
2 9/16"	65.9	255	3	-	6.75	102.77	133	57.2	128.6	100.0	57.1	-	10	200.00	8	29	153
3 1/16"	78.6	290	3	-	7.54	119.00	154	64.3	154.0	122.2	63.5	-	10	230.20	8	32	154
4 1/16"	104.0	360	3	-	8.33	150.62	194	78.6	195.3	158.7	73.0	-	10	290.50	8	39	155
5 1/8"	131.0	420	3	9.5	9.53	176.66	225	98.5	244.5	200.0	81.8	6.4	16	342.90	12	42	169
7 1/16"	180.2	505	6	11.1	11.11	241.83	305	119.1	325.4	276.2	92.1	7.9	16	428.60	16	42	156
9"	229.4	650	6	12.7	12.70	299.06	381	146.1	431.8	349.2	123.8	14.2	16	552.40	16	51	157
11"	280.2	815	6	14.3	14.29	357.23	454	187.4	584.2	427.0	235.7	12.7	16	711.20	20	54	158
13 5/8"	346.9	885	6	15.9	15.88	432.64	541	204.8	595.3	528.6	114.3	17.5	25	771.50	20	61	159
18 3/4"	477.0	1160	6	18.3	18.26	577.90	722	255.6	812.8	730.2	155.6	35.1	25	1016.00	20	80	164

NOTE :

1) TOLERANCE ACCORDING TO API 6A-20TH

2) RING GASKET ACCORDING TO API 6A-20TH

API 6A - TYPE - 6BX 138.0 MPA (20000 PSI)



UNIT : mm

Size	B	OD	C	E1	Q (MAX.)	G	K	T	J1	J2	J3	J4	R	BC	N	H	Ring Number
																	BX
1 13/16"	46.8	255	3	-	5.56	77.77	117	63.5	133.4	109.5	49.2	-	10	203.20	8	29	151
2 1/16"	53.2	285	3	-	5.95	86.23	132	71.5	154.0	127.0	52.4	-	10	230.20	8	32	152
2 9/16"	65.9	325	3	-	6.75	102.77	151	79.4	173.0	144.5	58.7	-	10	261.90	8	35	153
3 1/16"	78.6	355	3	-	7.54	119.00	171	85.8	192.1	160.3	63.5	-	10	287.30	8	39	154
4 1/16"	104.0	445	3	-	8.33	150.62	219	106.4	242.9	206.4	73.0	-	10	357.20	8	48	155
7 1/16"	180.2	655	6	11.1	11.11	241.83	352	165.1	385.8	338.1	96.8	7.9	16	554.00	16	54	156
9"	229.4	805	6	12.7	12.7	299.06	441	204.8	481.0	428.6	107.9	6.4	25	685.80	16	67	157
11"	280.2	885	6	14.3	14.29	357.23	505	223.9	566.7	508.0	103.2	12.7	25	749.30	16	74	158
13 5/8"	346.9	1160	6	15.9	15.88	432.64	614	292.1	693.7	628.6	133.3	14.2	25	1016.00	20	80	159

NOTE :

- 1) TOLERANCE ACCORDING TO API 6A-20TH
- 2) RING GASKET ACCORDING TO API 6A-20TH