

**Machinery Clinic**



## **JEENXI JHV 1300 VMC : WITH 4<sup>TH</sup> AXIS : 325 MM**

- Control : Fanuc 21iMB
- Year : 2008
- Spindle Taper : BT 40
- Magazine : 24 tool
- Atc : Arm Type
- Table Size : 1455 mm x 755 mm
- Travel X : 1300 mm
- Travel Y : 750 mm
- Travel Z : 700 mm
- 4<sup>th</sup> Axis : 325 mm Diameter
- Power Spindle Motor : 11 KW
- Spindle RPM : 10000 RPM
- Condition : Under power, Ready To Use,
- **Available On Request : You can make your jobs for 7 days @ our warehouse**
- **Available On Request : We can do Installation at your work shop @ additional charges**
- **Maintenance Training for 1 Day is Mandatory for your staff**
- **With Renishaw Laser Calibration Accuracy Reports**

**Latest Stock updates from Machinery Clinic : On Android App**

<https://play.google.com/store/apps/details?id=com.machinerymall>

[www.cncmall.in](http://www.cncmall.in)

[www.usedcnc.co.in](http://www.usedcnc.co.in)

[machineryclinic@gmail.com](mailto:machineryclinic@gmail.com)

**M : 898 0000 303 : 90548 28144**

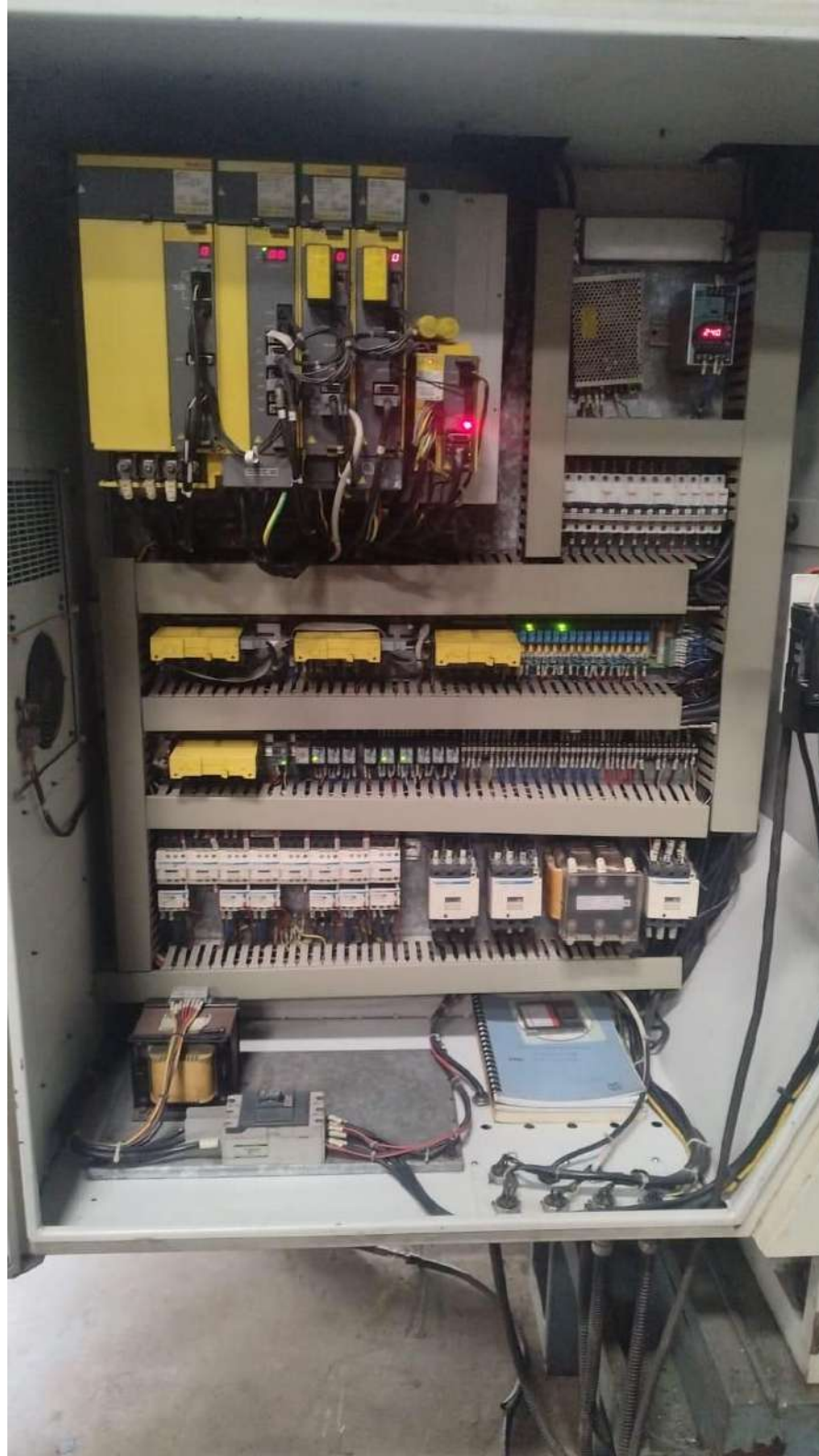
JHV-1300

JENKI





















124/AS



+B

-B



晶禧科技股份有限公司  
JEENXI TECHNOLOGY CO., LTD.

MODEL :

JHV-1300

SERIAL NO :

JH137F026

MAX. S. SPEED :

10000 RPM

MACHINE WEIGHT :

10000 KG

DATE OF MFG :

2007/03

INPUT:

220

VOLTS 3Ø 50/60Hz

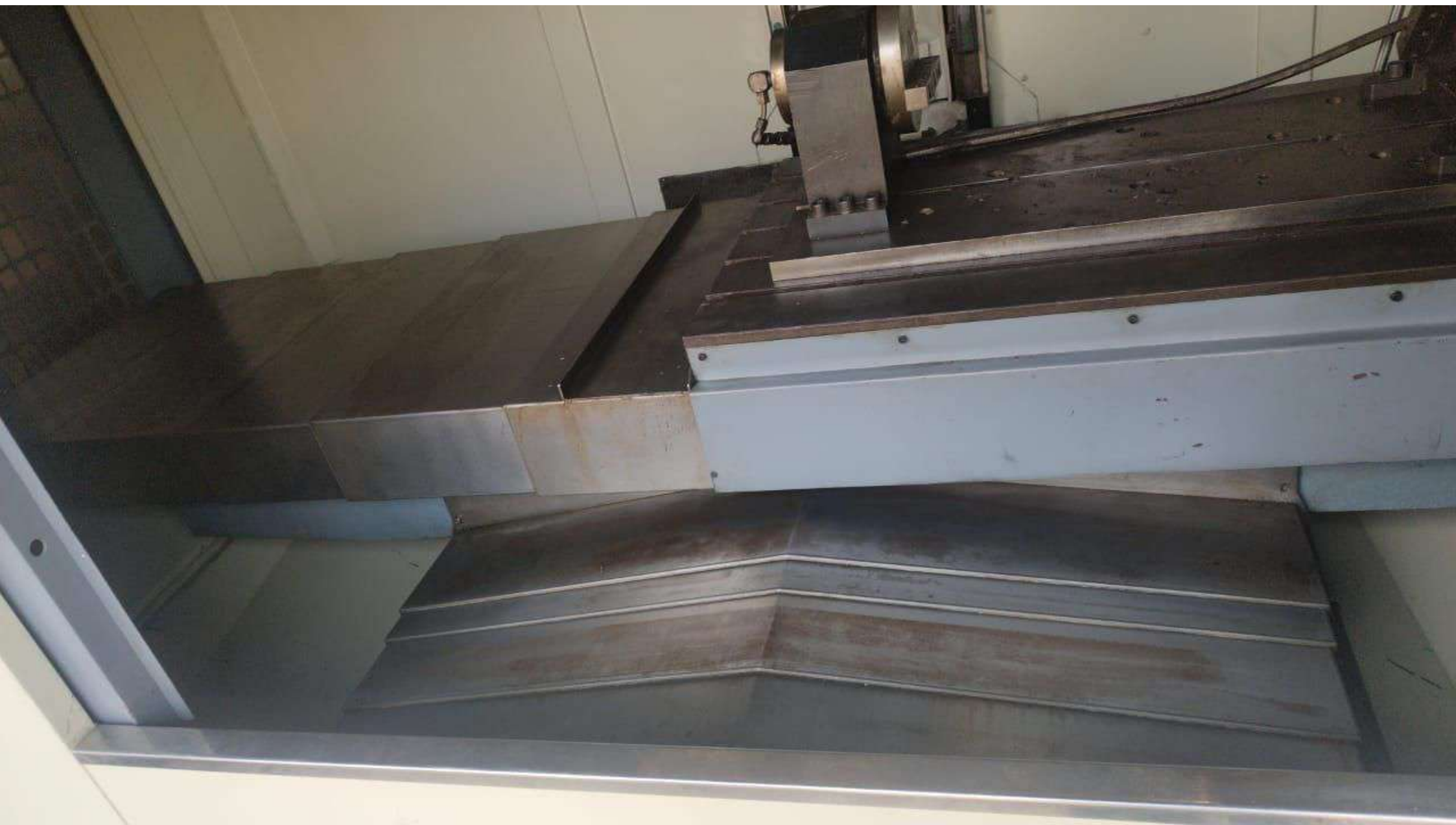
40

KVA

RATED CAPACITY

台灣省台中市 408 南屯區工業區 20 路 46 號  
TEL: +886-4-23597868 FAX: +886-4-23597100  
NO.46, 20 Road, Taichung Industrial Park,  
Nantun District, Taichung 408, Taiwan  
[Http://www.jeenxi.com.tw](http://www.jeenxi.com.tw)





# FANUC Series 21i-MB

00023 N00000

F 0

RELATIVE POSITION

RELATIVE	ABSOLUTE
X 0.000	X -483.407
Y -0.004	Y 500.125
Z -22.000	Z 520.010
A 0.000	A 0.000

CHANGING

CHANGING	EXIST TO SET
X 0.000	X 0.000
Y -0.004	Y 0.000
Z -22.000	Z 0.000
A -14.583	A 0.000

CHANGING

CHANGING	EXIST TO SET
000 040 054	F
017 049 064	H
093 080 069	H
022 094 015	D
094 050 025	H
021 067 028.1	D

PORTWIRE RESERVE LIMIT

PORTWIRE RESERVE LIMIT	X	Y	Z	A
1320 LIMIT 14	1302000	2000	5000	99999999
1321 LIMIT 1-	115000	-2000	-260000	-752000
				-99999999
				-115000

MDI \*\*\*\*\* 5 0 10000

11:41:35

MDI 500 ON:1 OFF:0 +INPUT INPUT

RESET

O<sub>K</sub> N<sub>0</sub> G<sub>E</sub> P<sub>C</sub> 7<sup>1</sup> 8<sup>1</sup> 9<sup>1</sup> ALTER

X<sub>U</sub> Y<sub>V</sub> Z<sub>W</sub> Q<sub>Y</sub> 4<sup>-</sup> 5<sup>+</sup> 6<sup>-</sup> INSERT

HELP I<sub>-</sub> J<sub>A</sub> K<sub>B</sub> R 1<sup>1</sup> 2<sup>1</sup> 3<sup>1</sup> DELETE

SHIFT M<sub>-</sub> S<sub>-</sub> T<sub>-</sub> L<sub>-</sub> 0

F<sub>C</sub> D<sub>J</sub> H<sub>A</sub> B<sub>B</sub> / EOS CAN INPUT

PAGE ↑

POS PROG OFFSET SETTING CUSTOM

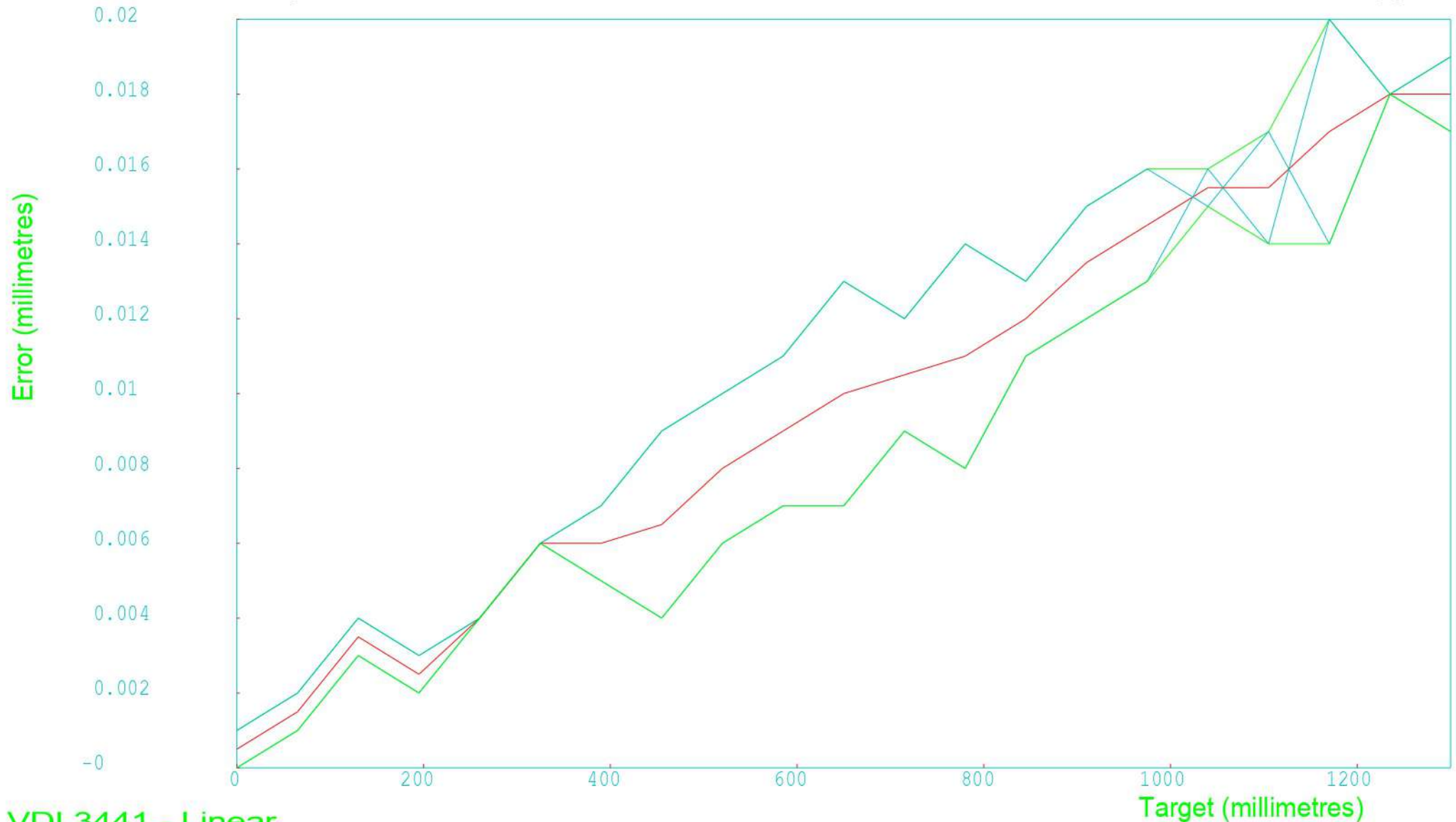
PAGE ↓

SYSTEM MESSAGE GRAPH

124/AS

VDI 3441

X AFT COMP



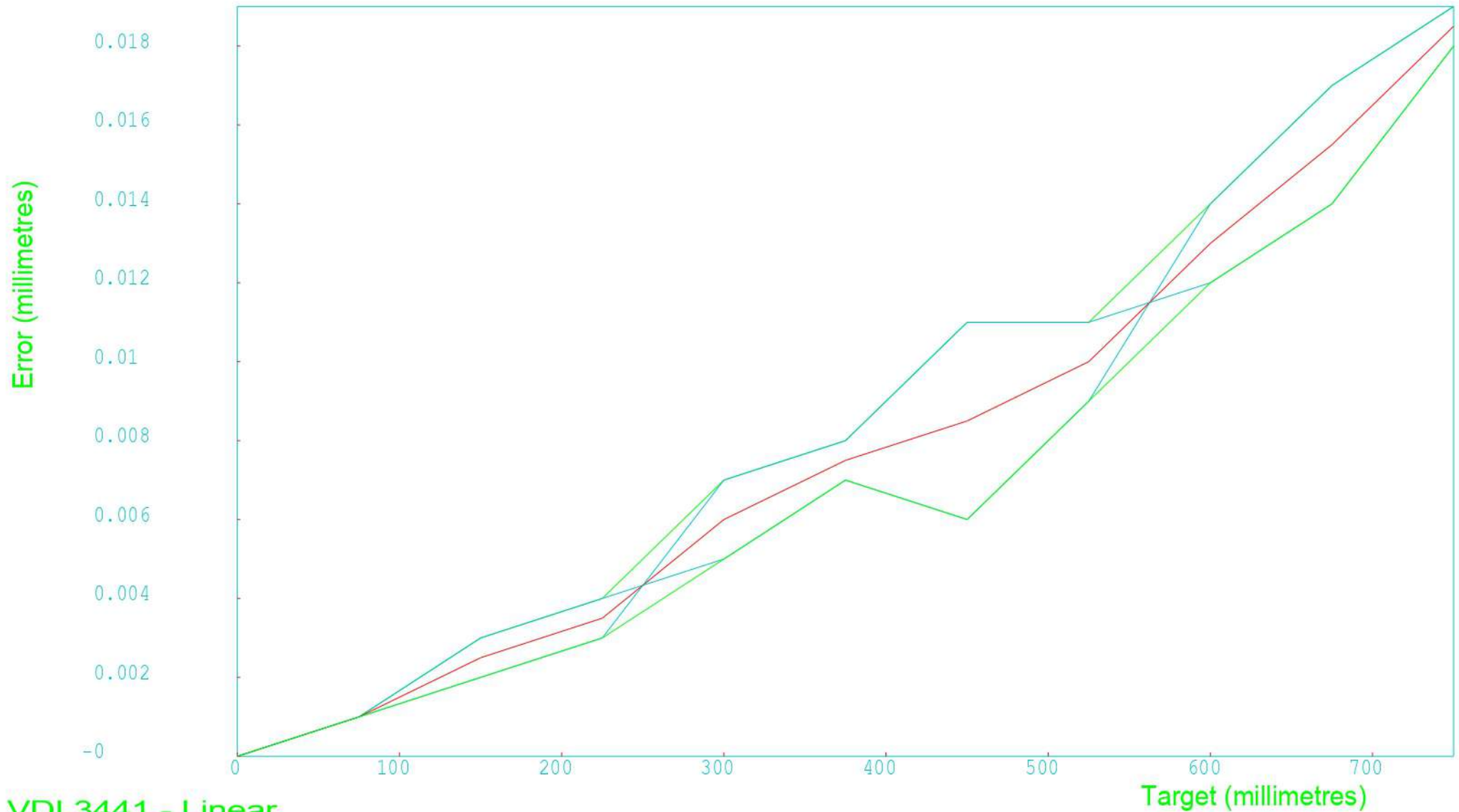
VDI 3441 - Linear

Machine:SUNMILL	Axis:X	U max : 0.006000
Serial No:JHV 1300	Location:MACHINERY CLINI	P : 0.020000
Date:2025-01-26 14:03:32	U mean : 0.002571	Ps max : 0.000000
By:CNC MALL	Ps mean : 0.000000	Pa : 0.017500



VDI 3441

Y AFT COMP

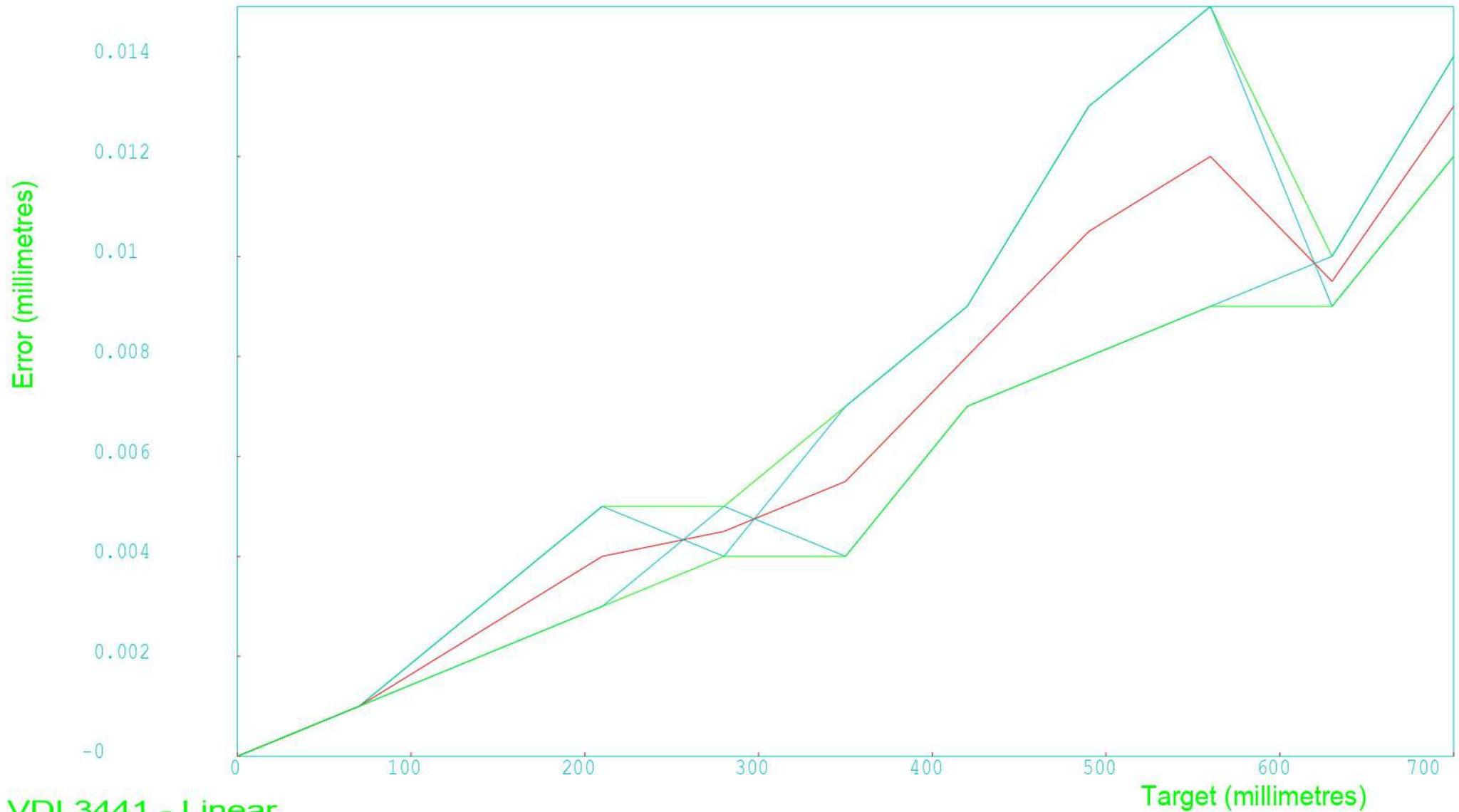


VDI 3441 - Linear

Machine:SUNMILL	Axis:Y	U max : 0.005000
Serial No:JHV 1300	Location:MACHINERY CLINI	P : 0.019000
Date:2025-01-26 15:06:19	U mean : 0.001636	Ps max : 0.000000
By:CNC MALL	Ps mean : 0.000000	Pa : 0.018500

VDI 3441

Z AFT COMP



VDI 3441 - Linear

Machine:SUNMILL	Axis:Z	U max : 0.006000
Serial No:JHV 1300	Location:MACHINERY CLINI	P : 0.015000
Date:2025-01-26 16:08:09	U mean : 0.002091	Ps max : 0.000000
By:CNC MALL	Ps mean : 0.000000	Pa : 0.013000



Established in 2007, **Machinery Clinic** has emerged as a trusted leader in the Indian industrial sector, specializing in the supply of high-quality CNC machines, industrial robots, and comprehensive retrofitting and calibration services. With nearly two decades of experience, we have built a reputation for delivering innovative solutions tailored to meet the dynamic needs of our clients across various industries.

### Our Offerings:

1. **New CNC Machines:** We supply state-of-the-art CNC machines designed to enhance productivity, precision, and efficiency in manufacturing processes. Our product range caters to diverse applications, ensuring a perfect fit for every business requirement. **Turning, VMC, Gantry, HMC, DTC, Gear Hobbing, VTL, HBM, CMM, VMM, Swiss Head Machines etc.....(Anything In CNC Machines Range)**
2. **Used CNC Machines:** We provide meticulously inspected and refurbished used CNC machines, offering cost-effective solutions without compromising on performance and reliability.
3. **Industrial Robots:** From welding to handling, our range of industrial robots empowers businesses to automate complex processes, improve consistency, and achieve higher throughput. (For Any Application)
4. **Retrofitting Services:** Our expert team specializes in retrofitting all types of machine tools, upgrading older machines with the latest technologies to enhance their performance and extend their lifespan, with Latest Different make CNC Controllers.
5. **Laser Calibration and Ball Bar Testing:** Ensuring peak performance and precision, we offer laser calibration and ball bar testing services for all types of CNC machines. These services help identify and rectify inaccuracies, ensuring optimal machine efficiency. We have High End Renishaw Equipments.

### Why Choose Machinery Clinic?

- **Expertise and Experience:** With over 25 years of industry experience, we bring unparalleled knowledge and expertise to every project.
- **Quality Assurance:** We are committed to providing only the best-in-class machines and services, ensuring high performance and reliability.
- **Comprehensive Solutions:** From sales to after-sales service, we provide end-to-end solutions tailored to our clients' unique requirements.
- **Nationwide Reach:** Our operations span across India, ensuring timely delivery and support no matter where our clients are located.
- **Customer-Centric Approach:** We pride ourselves on building long-term relationships with our clients by understanding their needs and exceeding their expectations.

**Mission:** To empower Indian industries with cutting-edge machinery and services, enabling them to achieve unparalleled efficiency, precision, and growth.

**Vision:** To be the most trusted partner for CNC machines, industrial robots, and retrofitting services, driving innovation and excellence in the manufacturing sector.

### Contact Us:

#### **MACHINERY CLINIC**

Road No. 1, Shed No. B2 and B3, Gopalcharan Estate - 2,  
Bakrol - Bujarang, Taluka – Daskroi, Ahmedabad – 382430

[www.cncmall.in](http://www.cncmall.in) : [www.usedcnc.co.in](http://www.usedcnc.co.in)

[machineryclinic@gmail.com](mailto:machineryclinic@gmail.com)

**M : 898 0000 303**





**HOUSE OF TECHNOLOGY**