



C E R T I F I C A T E

Certificate No. 20-PPV-0001509/02-M12-TIC

WE HEREBY DECLARE THAT THE PHOTOVOLTAIC MODULES WITH THE MODEL

ASM-345, ASM-380, ASM-375, ASM-370, ASM-365, ASM-360, ASM-355, ASM-350, ASM-345, ASM-340, ASM-335, ASM-330, ASM-325, ASM-320, ASM-315, ASM-311, ASM-345, ASM-340, ASM-335, ASM-330, ASM-325, ASM-320, ASM-315, ASM-310, ASM-305, ASM-300, ASM-295, ASM-290, ASM-285, ASM-315, ASM-310, ASM-305, ASM-300, ASM-295, ASM-290, ASM-285, ASM-280, ASM-275, ASM-270, ASM-265, ASM-260, ASM-285, ASM-280, ASM-275, ASM-270, ASM-265, ASM-260, ASM-255, ASM-250, ASM-245, ASM-240, ASM-235, ASM-230, ASM-225, ASM-220, ASM-215, ASM-210, ASM-207, ASM-190, ASM-185, ASM-180, ASM-175, ASM-170, ASM-165, ASM-160, ASM-155, ASP-358, ASP-355, ASP-350, ASP-345, ASP-340, ASP-335, ASP-330, ASP-325, ASP-320, ASP-315, ASP-310, ASP-305, ASP-295, ASP-290, ASP-285, ASP-280, ASP-275, ASP-270, ASP-265, ASP-260, ASP-255, ASP-250, ASP-245, ASP-240, ASP-235, ASP-230, ASP-225, ASP-220, ASP-215, ASP-210, ASP-205, ASP-200, ASP-195, ASP-179, ASP-175, ASP-170, ASP-165, ASP-160, ASP-155, ASP-150

PSS-24345 & PSS-24325 (Tested Type)

And with Types extended for similarity (*) - See Annex -

OEM APPLICANT & LICENSE HOLDER

Abhishek Solar Industries Pvt Ltd

Besides Premchand Mahto High School Mesra, P.O Neori Vikas, Ranchi, Jharkhand, 835217

IS IN COMPLIANCE WITH THE REQUIREMENTS SET OUT IN CERTIFICATION PROGRAM

TIC-PR-PC-08-Annex 13-en Rev 1.3-10-2020-Product Certification Scheme PV

IEC 61215-1:2016

Terrestrial photovoltaic (PV) modules - Design qualification and type approval - Part 1: Test requirements

IEC 61215-1-1:2016

Terrestrial photovoltaic (PV) modules - Design qualification and type approval - Part 1-1: Special requirements for testing of crystalline silicon photovoltaic (PV) modules

IEC 61215-2:2016

Terrestrial photovoltaic (PV) modules - Design qualification and type approval - Part 2: Test procedures

IEC 61730-1:2016

Photovoltaic (PV) module safety qualification - Part 1: Requirements for construction

IEC 61730-2:2016

Photovoltaic (PV) module safety qualification - Part 2: Requirements for testing

To be used in plants at a total voltage up to: 1500 Vdc (application Class A)

AS RESULT OF THE TEST CARRIED OUT BY KACST PV LAB ACCREDITED BY GAC no. 0046

REPORT No. TIC-KPVL18/0005_IEC61215-2 & TIC-KPVL18/0006_IEC61215-2

TIC-KPVL18/0005_IEC61730-2 & TIC-KPVL18/0006_IEC61730-2

First issuing 08.09.2020

Expiring date 04.12.2023

(Providing that the testing basis continues unchanged)

Notes: (*) The OEM applicant and the manufacturer declare that these products are constructed using the same materials, components and processes as the tested types of PSS-24345 & PSS-24325. Further details on certified models are reported on the annex. Technical data, materials and components description are into the indicated test reports. Any changes of the design, materials, components or processing may require the repetition of some of the qualification tests in order to retain type approval. The certification is performed on tested model as complete certification. This certificate is for type approval and based on voluntarily product test and with Factory Inspection. This certificate is valid and can be used only with its annexes.



Deutsche
Akkreditierungsstelle
D-ZE-16012-01-00



Bonn, 18.01.2021



L. Lindenblatt

Ing. K. Lindenblatt

INTERCERT Certification Body



C E R T I F I C A T E

Annex 1 of
Certificate No. 20-PPV-0001509/02-M12-TIC
THE PHOTOVOLTAIC MODULES WITH THE MODELS

Types extended for similarity* with Si-Monocrystalline PERC Cell Technology without need of re-testing
(according to IEC61215 "Retesting guideline"):

Type	Cell Number	Cell Size	Power [W]
ASM-345*	72	156,75x156,75	345
ASM-380*	72	156,75x156,75	380
ASM-375*	72	156,75x156,75	375
ASM-370*	72	156,75x156,75	370
ASM-365*	72	156,75x156,75	365
ASM-360*	72	156,75x156,75	360
ASM-355*	72	156,75x156,75	355
ASM-350*	72	156,75x156,75	350
ASM-345*	72	156,75x156,75	345
ASM-340*	72	156,75x156,75	340
ASM-335*	72	156,75x156,75	335
ASM-330*	72	156,75x156,75	330
ASM-325*	72	156,75x156,75	325
ASM-320*	72	156,75x156,75	320
ASM-315*	72	156,75x156,75	315
ASM-311*	72	156,75x156,75	311
ASM-345*	66	156,75x156,75	345
ASM-340*	66	156,75x156,75	340
ASM-335*	66	156,75x156,75	335
ASM-330*	66	156,75x156,75	330
ASM-325*	66	156,75x156,75	325
ASM-320*	66	156,75x156,75	320
ASM-315*	66	156,75x156,75	315

Notes: (*)The OEM applicant and the manufacturer declare that these products are constructed using the same materials, components and processes as the tested types PSS-24345 & PSS-24325. Technical data, materials and components description are into the indicated test reports. Any changes of the design, materials, components or processing may require the repetition of some of the qualification tests in order to retain type approval. The certification is performed on tested model as complete certification. This certificate is for type approval and based on voluntarily product test and with Factory Inspection. This annex is valid and can be used only with its certificate.



Bonn, 18.01.2021



K. Lindenblatt

Ing. K. Lindenblatt

INTERCERT Certification Body



C E R T I F I C A T E

Annex 5 of Certificate No. 20-PPV-0001509/02-M12-TIC

THE PHOTOVOLTAIC MODULES WITH THE MODELS

Types extended for similarity* with Si-Polycrystalline Cell Technology without need of re-testing
(according to IECCE "Retesting guideline"):

Type	Cell Number	Cell Size	Power [W]
ASP-300*	66	156,75x156,75	300
ASP-295*	66	156,75x156,75	295
ASP-290*	66	156,75x156,75	290
ASP-285*	66	156,75x156,75	285
ASP-280*	66	156,75x156,75	280
ASP-275*	66	156,75x156,75	275
ASP-270*	66	156,75x156,75	270
ASP-295*	60	156,75x156,75	295
ASP-290*	60	156,75x156,75	290
ASP-285*	60	156,75x156,75	285
ASP-280*	60	156,75x156,75	280
ASP-275*	60	156,75x156,75	275
ASP-270*	60	156,75x156,75	270
ASP-265*	60	156,75x156,75	265
ASP-260*	60	156,75x156,75	260
ASP-255*	60	156,75x156,75	255
ASP-250*	60	156,75x156,75	250
ASP-245*	60	156,75x156,75	245
ASP-265*	54	156,75x156,75	265
ASP-260*	54	156,75x156,75	260
ASP-255*	54	156,75x156,75	255
ASP-250*	54	156,75x156,75	250
ASP-245*	54	156,75x156,75	245
ASP-240*	54	156,75x156,75	240
ASP-235*	54	156,75x156,75	235
ASP-230*	54	156,75x156,75	230
ASP-225*	54	156,75x156,75	225
ASP-220*	54	156,75x156,75	220

Notes: (*) The manufacturer declares that these products are constructed using the same materials, components and processes as the tested types PSS-24345 & PSS-24325. Technical data, materials and components description are into the indicated test reports. Any changes of the design, materials, components or processing may require the repetition of some of the qualification tests in order to retain type approval. The certification is performed on tested model as complete certification. This certificate is for type approval and based on voluntarily product test and with Factory Inspection. This annex is valid and can be used only with its certificate.



Bonn, 18.01.2021



L. Lindenblatt

Ing. K. Lindenblatt

INTERCERT Certification Body



C E R T I F I C A T E

Annex 3 of Certificate No. 20-PPV-0001509/02-M12-TIC

THE PHOTOVOLTAIC MODULES WITH THE MODELS

Types extended for similarity* with Si-Monocrystalline PERC Cell Technology without need of re-testing
(according to IEC61215 "Retesting guideline"):

Type	Cell Number	Cell Size	Power [W]
ASM-245*	54	156,75x156,75	245
ASM-240*	54	156,75x156,75	240
ASM-235*	54	156,75x156,75	235
ASM-253*	48	156,75x156,75	253
ASM-250*	48	156,75x156,75	250
ASM-245*	48	156,75x156,75	245
ASM-240*	48	156,75x156,75	240
ASM-235*	48	156,75x156,75	235
ASM-230*	48	156,75x156,75	230
ASM-225*	48	156,75x156,75	225
ASM-220*	48	156,75x156,75	220
ASM-215*	48	156,75x156,75	215
ASM-210*	48	156,75x156,75	210
ASM-207*	48	156,75x156,75	207
ASM-190*	36	156,75x156,75	190
ASM-185*	36	156,75x156,75	185
ASM-180*	36	156,75x156,75	180
ASM-175*	36	156,75x156,75	175
ASM-170*	36	156,75x156,75	170
ASM-165*	36	156,75x156,75	165
ASM-160*	36	156,75x156,75	160
ASM-155*	36	156,75x156,75	155

Notes: (*) The manufacturer declares that these products are constructed using the same materials, components and processes as the tested types PSS-24345 & PSS-24325. Technical data, materials and components description are into the indicated test reports. Any changes of the design, materials, components or processing may require the repetition of some of the qualification tests in order to retain type approval. The certification is performed on tested model as complete certification. This certificate is for type approval and based on voluntarily product test and with Factory Inspection. This annex is valid and can be used only with its certificate.



Bonn, 18.01.2021



L. Lindenblatt

Ing. K. Lindenblatt

INTERCERT Certification Body



C E R T I F I C A T E

Annex 4 of Certificate No. 20-PPV-0001509/02-M12-TIC

THE PHOTOVOLTAIC MODULES WITH THE MODELS

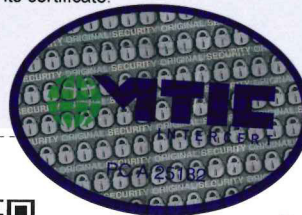
Types extended for similarity* with Si-Polycrystalline Cell Technology without need of re-testing
(according to IECCE "Retesting guideline"):

Type	Cell Number	Cell Size	Power [W]
ASP-358*	72	156,75x156,75	358
ASP-355*	72	156,75x156,75	355
ASP-350*	72	156,75x156,75	350
ASP-345*	72	156,75x156,75	345
ASP-340*	72	156,75x156,75	340
ASP-335*	72	156,75x156,75	335
ASP-330*	72	156,75x156,75	330
ASP-325*	72	156,75x156,75	325
ASP-320*	72	156,75x156,75	320
ASP-315*	72	156,75x156,75	315
ASP-310*	72	156,75x156,75	310
ASP-305*	72	156,75x156,75	305
ASP-300*	72	156,75x156,75	300
ASP-295*	72	156,75x156,75	295
ASP-293*	72	156,75x156,75	293
ASP-328*	66	156,75x156,75	328
ASP-325*	66	156,75x156,75	325
ASP-320*	66	156,75x156,75	320
ASP-315*	66	156,75x156,75	315
ASP-310*	66	156,75x156,75	310
ASP-305*	66	156,75x156,75	305

Notes: (*) The manufacturer declares that these products are constructed using the same materials, components and processes as the tested types PSS-24345 & PSS-24325. Technical data, materials and components description are into the indicated test reports. Any changes of the design, materials, components or processing may require the repetition of some of the qualification tests in order to retain type approval. The certification is performed on tested model as complete certification. This certificate is for type approval and based on voluntarily product test and with Factory Inspection. This annex is valid and can be used only with its certificate.



Bonn, 18.01.2021



L. Lindenblatt

Ing. K. Lindenblatt

INTERCERT Certification Body



C E R T I F I C A T E

Annex 2 of Certificate No. 20-PPV-0001509/02-M12-TIC

THE PHOTOVOLTAIC MODULES WITH THE MODELS

Types extended for similarity* with Si-Monocrystalline PERC Cell Technology without need of re-testing
(according to IEC61215 "Retesting guideline"):

Type	Cell Number	Cell Size	Power [W]
ASM-310*	66	156,75x156,75	310
ASM-305*	66	156,75x156,75	305
ASM-300*	66	156,75x156,75	300
ASM-295*	66	156,75x156,75	295
ASM-290*	66	156,75x156,75	290
ASM-285*	66	156,75x156,75	285
ASM-315*	60	156,75x156,75	315
ASM-310*	60	156,75x156,75	310
ASM-305*	60	156,75x156,75	305
ASM-300*	60	156,75x156,75	300
ASM-295*	60	156,75x156,75	295
ASM-290*	60	156,75x156,75	290
ASM-285*	60	156,75x156,75	285
ASM-280*	60	156,75x156,75	280
ASM-275*	60	156,75x156,75	275
ASM-270*	60	156,75x156,75	270
ASM-265*	60	156,75x156,75	265
ASM-260*	60	156,75x156,75	260
ASM-285*	54	156,75x156,75	285
ASM-280*	54	156,75x156,75	280
ASM-275*	54	156,75x156,75	275
ASM-270*	54	156,75x156,75	270
ASM-265*	54	156,75x156,75	265
ASM-260*	54	156,75x156,75	260
ASM-255*	54	156,75x156,75	255
ASM-250*	54	156,75x156,75	250

Notes: (*) The manufacturer declares that these products are constructed using the same materials, components and processes as the tested types PSS-24345 & PSS-24325. Technical data, materials and components description are into the indicated test reports. Any changes of the design, materials, components or processing may require the repetition of some of the qualification tests in order to retain type approval. The certification is performed on tested model as complete certification. This certificate is for type approval and based on voluntarily product test and with Factory Inspection. This annex is valid and can be used only with its certificate.



Deutsche
Akkreditierungsstelle
D-ZE-16012-01-00



Bonn, 18.01.2021



L. Lindenblatt

Ing. K. Lindenblatt

INTERCERT Certification Body



C E R T I F I C A T E

Annex 6 of Certificate No. 20-PPV-0001509/02-M12-TIC

THE PHOTOVOLTAIC MODULES WITH THE MODELS

Types extended for similarity* with Si-Polycrystalline Cell Technology without need of re-testing
(according to IEC61215 "Retesting guideline"):

Type	Cell Number	Cell Size	Power [W]
ASP-235*	48	156,75x156,75	235
ASP-230*	48	156,75x156,75	230
ASP-225*	48	156,75x156,75	225
ASP-220*	48	156,75x156,75	220
ASP-215*	48	156,75x156,75	215
ASP-210*	48	156,75x156,75	210
ASP-205*	48	156,75x156,75	205
ASP-200*	48	156,75x156,75	200
ASP-195*	48	156,75x156,75	195
ASP-179*	36	156,75x156,75	179
ASP-175*	36	156,75x156,75	175
ASP-170*	36	156,75x156,75	170
ASP-165*	36	156,75x156,75	165
ASP-160*	36	156,75x156,75	160
ASP-155*	36	156,75x156,75	155
ASP-150*	36	156,75x156,75	150

Notes: (*) The manufacturer declares that these products are constructed using the same materials, components and processes as the tested types PSS-24345 & PSS-24325. Technical data, materials and components description are into the indicated test reports. Any changes of the design, materials, components or processing may require the repetition of some of the qualification tests in order to retain type approval. The certification is performed on tested model as complete certification. This certificate is for type approval and based on voluntarily product test and with Factory Inspection. This annex is valid and can be used only with its certificate.



Deutsche
Akkreditierungsstelle
D-ZE-16012-01-00



Bonn, 18.01.2021



L. Lindenblatt

Ing. K. Lindenblatt

INTERCERT Certification Body